

PART OF WEST 1/2 OF SEC. 24 T.5N., R.1W., S.L.B.& M.
EASTWOOD SUBDIVISION NO. 10

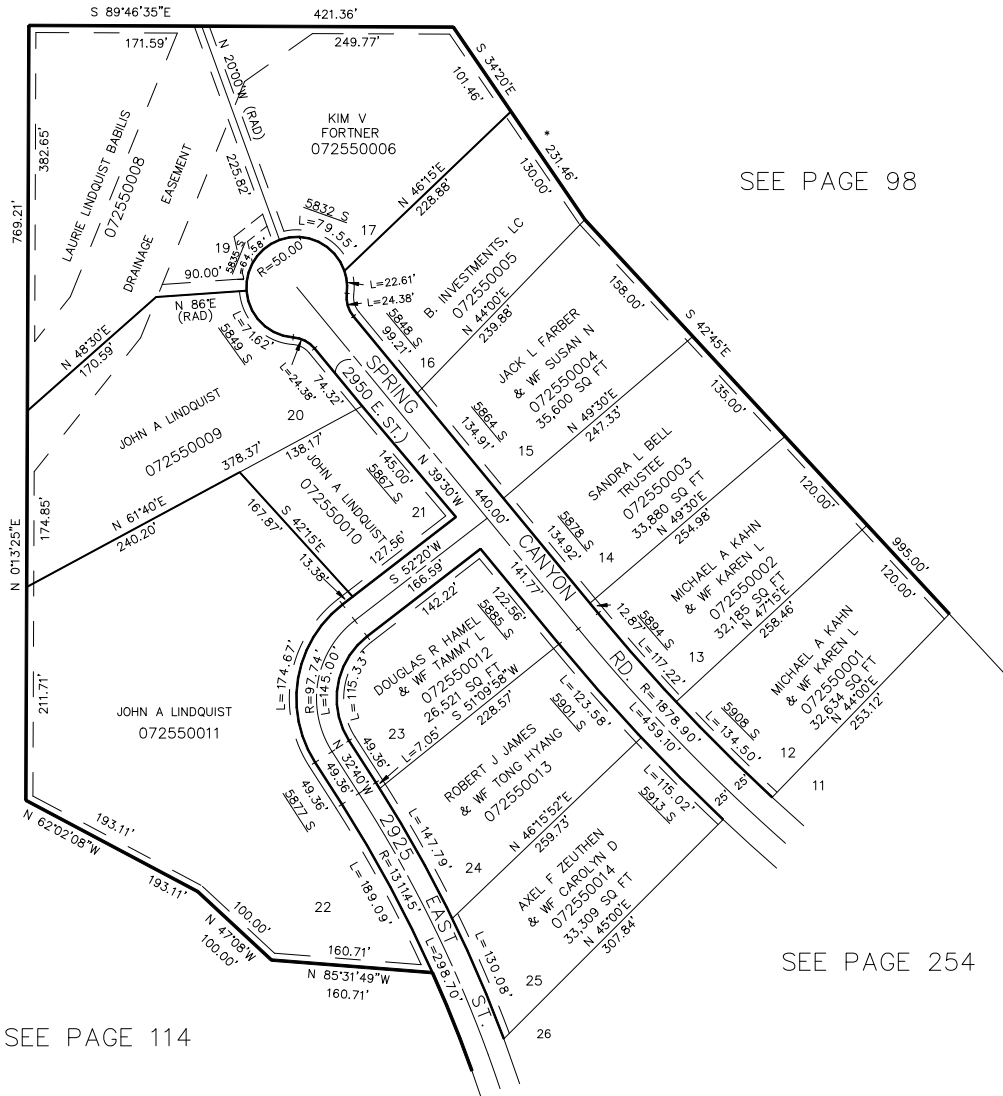
LOTS 12-16, 20, 21

AMENDED LOTS 17-19, 22-25

IN WEBER COUNTY

SCALE 1"=100'

TAXING UNIT: 159



SEE PAGE 86

SEE PAGE 98

SEE PAGE 254

SEE PAGE 114

7' UTILITY & DRAINAGE EASEMENTS
 EACH SIDE OF PROPERTY LINE
 AS INDICATED BY DASHED LINES,
 EXCEPT AS OTHERWISE SHOWN.

FOR COMPLETE ENG. DATA SEE
 ORIGINAL DEDICATION PLAT IN
 BOOK 22, PAGES 74 & 75.
 *AMENDED BOOK 23, PAGE 49.